

Get in Touch

To find out more or make a
referral, email:

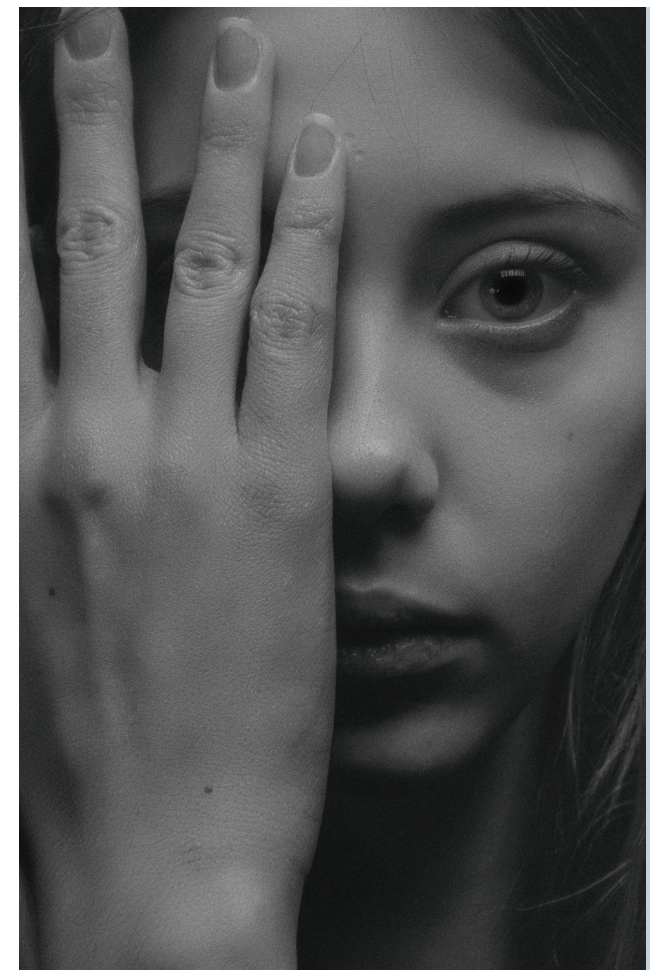
youthprograms@chdinc.org

or call **(541) 962-8800**

and ask about our
programs



In order to receive government funding, CHD is required by state and county policies to charge for some of the services it provides to the public. However, no one will be denied clinical services because of an inability to pay. Discounts are available based on family size and income. There are no charges for CHD Veterans Services. For more information, please see the front desk. CHD does not discriminate on the basis of race, ethnicity, gender, gender identity, gender presentation, sexual orientation, religion, creed, age (except when program eligibility is restricted to children, adults, or older adults), familial status, marital status, source of income, and disability. Language services, interpreters, or other assistive aids are available at no cost. For more information, contact Human Resources, 541-962-8811, or TTY 1-800-735-2900, or dial 711.



**Intensive In-home
Behavioral Health
Treatment
IIBHT PROGRAM**
Center for Human Development, Inc.

CHD

"working for healthy communities"

About this Program

Intensive In-home Behavioral Health Treatment is a new level of care offered to children, youth and young adults (0-20 years of age) and their families who are enrolled in the Oregon Health Plan.

IIBHT offers treatment outlined in the youth and family's Service Plan, and proactive support and 24/7 crisis response, outlined in the youth and family's Crisis and Safety Plan.

The IIBHT Program can provide 4-6 hours of intensive, in-home services per week to children who need more support and services than what is provided in traditional outpatient services.

IIBHT is organized to help with the reduction in out of home placements for young people including residential treatment and inpatient hospitalizations.



Requirement for Services

- Multiple behavioral health diagnoses;
and
- Multiple life domains (school, home, community) affected;
and
- Significant safety risks or concerns;
or
- Are at risk of out-of-home treatment or placement;
or
- Are transitioning home from an out-of-home treatment or placement.



Services Offered

- Skills training
- Case management
- Proactive support and 24/7 crisis response
- Psychiatric services, including medication management
- Individual therapy
- Family therapy
- Peer-delivered services
- Care coordination
- Other services provided depending on family needs

Services tailored to meet the individual needs of the young person and their family, for as long as individual support is needed